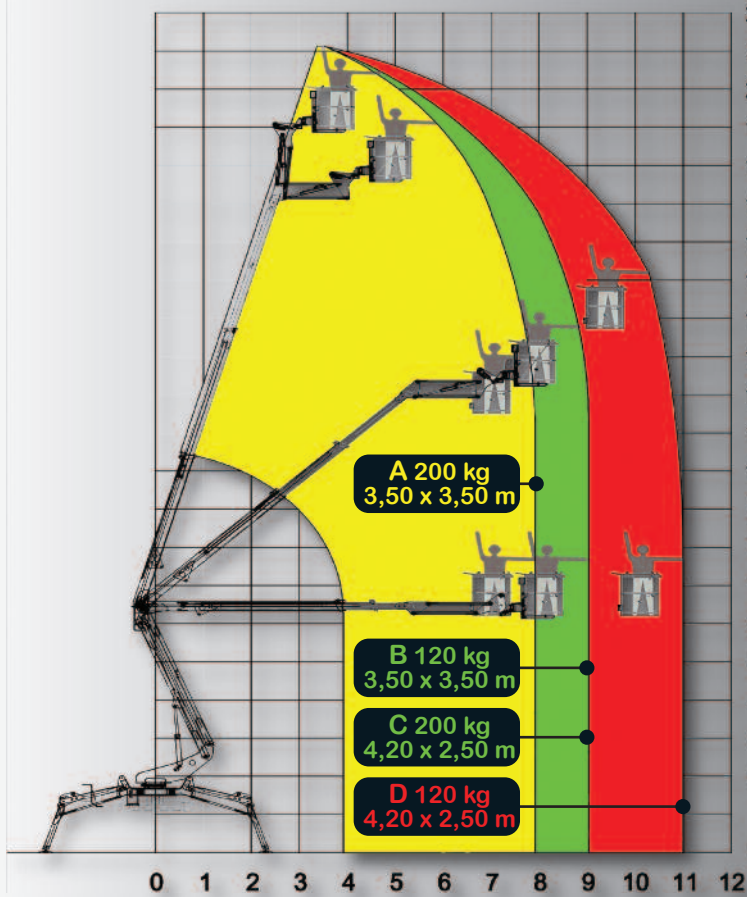




**R 210**

[www.easy-lift.it](http://www.easy-lift.it)





<b>I</b>	
- Altezza massima di lavoro	21,20 m
- Sbraccio massimo di lavoro	11 m
- Rotazione torretta	360° <sub>N.C.</sub>
- Portata massima	200 Kg
- Comandi elettroidraulici Danfoss	
- Massa totale	3000 Kg.
- Pendenza superabile	30%
- Dimensioni cesto	1,4 x 0,7
- Rotazione cesto	90°+90°

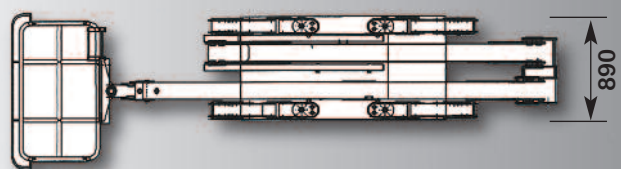
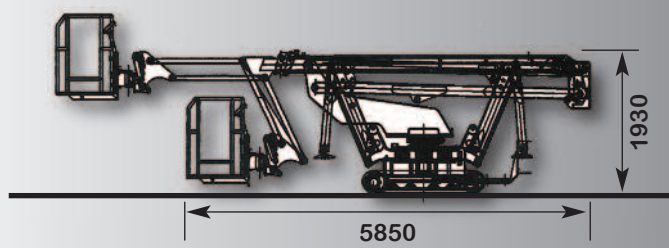
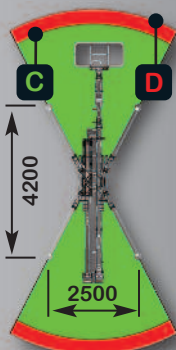
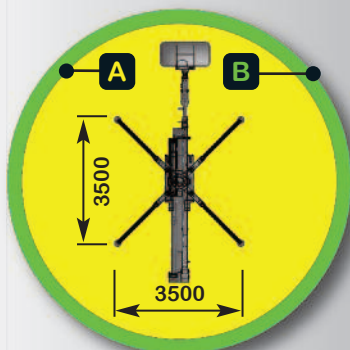
<b>UK</b>	
- Max. working height	21,20 m
- Max. working outreach	11 m
- Turret rotation	360° <sub>N.C.</sub>
- Max load capacity	200 Kg
- Electrohydraulic controls Danfoss	
- Total weight	3000 Kg.
- Gradeability	30%
- Cage dimension	1,4 x 0,7
- Cage rotation	90°+90°

<b>E</b>	
- Altura max de trabajo	21,20 m
- Alcance max de trabajo	11 m
- Rotación torreta	360° <sub>N.C.</sub>
- Capacidad de carga	200 Kg
- Mandos electrohidráulicos Danfoss	
- Peso total	3000 Kg.
- Pendiente màx	30%
- Dimensiones cesta	1,4 x 0,7
- Rotación cesta	90°+90°

<b>F</b>	
- Hauteur max de travail	21,20 m
- Dèport max de travail	11 m
- Rotation tourelle	360° <sub>N.C.</sub>
- Portée max	200 Kg
- Commandes electrohydrauliques Danfoss	
- Poids total	3000 Kg.
- Max pente admissible	30%
- Dimensions panier	1,4 x 0,7
- Rotation panier	90°+90°

<b>D</b>	
- Max. Arbeitshöhe	21,20 m
- Max. Arbeitsauslegung	11 m
- Drehturmrotation	360° <sub>N.C.</sub>
- Max. Tragfaehigkeit	200 Kg
- Elektrohydraulische Steuerungen Danfoss	
- Gewicht	3000 Kg.
- Max. Steigfaehigkeit	30%
- Korbabmessungen	1,4 x 0,7
- Korbdrehung	90°+90°

- Dati e descrizioni sono forniti a titolo indicativo e non impegnativo  
 - Data and descriptions are approximate and not binding  
 - Los datos y las descripciones son suministrados indicativamente y sin compromiso  
 - Toutes les données et descriptions sont fournies à titre indicatif, sans engagement  
 - Abgaben und Beschreibungen sind nicht verbindlich



DISTRIBUTORE/DISTRIBUTOR/REVENDEDOR/DISTRIBUTEUR/HAENDLER